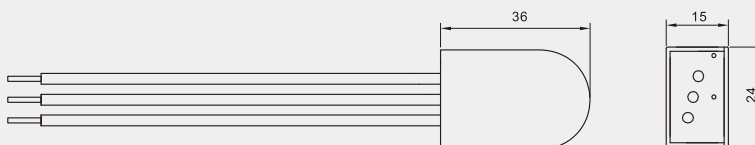
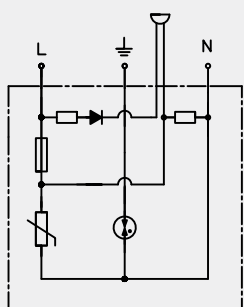
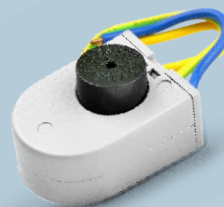


TY275-6-B

Type 3 Surge Arrester



■ Type 3 surge arrester is installed between LPZ2 and LPZ3, it can provide protection for equipments.

		TY275-6-B
SPD classification according to EN61 643-11		Type 3
SPD classification according to IEC61643-11		Class III
Norminal a.c. voltage	Un	230V
Max. continuous operating a.c. voltage	Uc	275V
Max. continuous operating d.c. voltage	Uc	300V
Nominal discharge current (8/20μs)	In	3kA
Combined impulse	Uoc	6kV
Voltage protection level	Up	≤1200V
Response time	tA	≤25ns
Operating temperature range	Tu	-40°C-80°C
Operating state fault indication		BEEP
For mounting on		35mm Din rail
Enclosure material		Thermoplastic UL94-V0
Degree of protection		IP20